

FROM INCARCERATED ADOLESCENT TO PRODUCTIVE ADULT

**Valerie Westhead, MD, Medical Operations Consultant, MTM Services
Chief Medical Officer, Aspire Health Partners**

Erin Martin, LMHC, Director Acute Care Services, Aspire Health Partners

Katherine Schroeder, LMHC, VP Seminole System of Care, Aspire Health Partners



Learning Objectives

- Learn sequential mapping, intercept points, and how to expand services and engagement between Behavioral Health Services and the Criminal Justice System
- Review best practices in partnering with law enforcement, courts, jails and probation for alternative responses including pre-and post-diversion and problem-solving courts
- Discuss Rapid Cycle Change as a technique to quickly implement projects



All I Really Need to Know I Learned in Kindergarten

Robert Fulghum

- Play Fair
- Don't hit people
- Clean up your own mess
- Don't take things that aren't yours
- Say you're sorry when you hurt somebody
- When you go out into the world, watch out for traffic, hold hands and stick together
- Live a balanced life – learn some and think some and draw and paint and sing and dance and play and work some every day

Developmental Tasks Of Adolescents

- Identity vs. Role Confusion
 - Synthesis of past experiences, expanding independence and new boundaries with family
 - Peers – the new measure of self worth
 - Personal value system is beginning to be defined
 - Successes and failures become more personal
- Support system
 - Parents
 - Mentors
- Successful navigation of previous milestones?
 - Stable family?
 - Trauma?



The Teenage Brain

Frances E Jensen, MD

- A Brain still under construction
 - Only 80 % Developed
 - Connecting from Back to Front
 - Plasticity – still learning how to live
- The Circadian Rhythm of the Adolescent
 - Time Shift
 - Time for synthesis
- Risk Taking – more excitatory neurons than inhibitory neurons ... which leads to imperfect self control



What can go wrong?

- Substance Use
 - Starting at age 12
 - THC Data
- Trauma
 - Physical – risk taking and concussions
 - Emotional – bullying, mass shootings
 - Sexual – abuse and unsafe experimentation
- Genetics – onset of mental illness
 - Schizophrenia
 - Bipolar Disorder



Therapeutic Jurisprudence

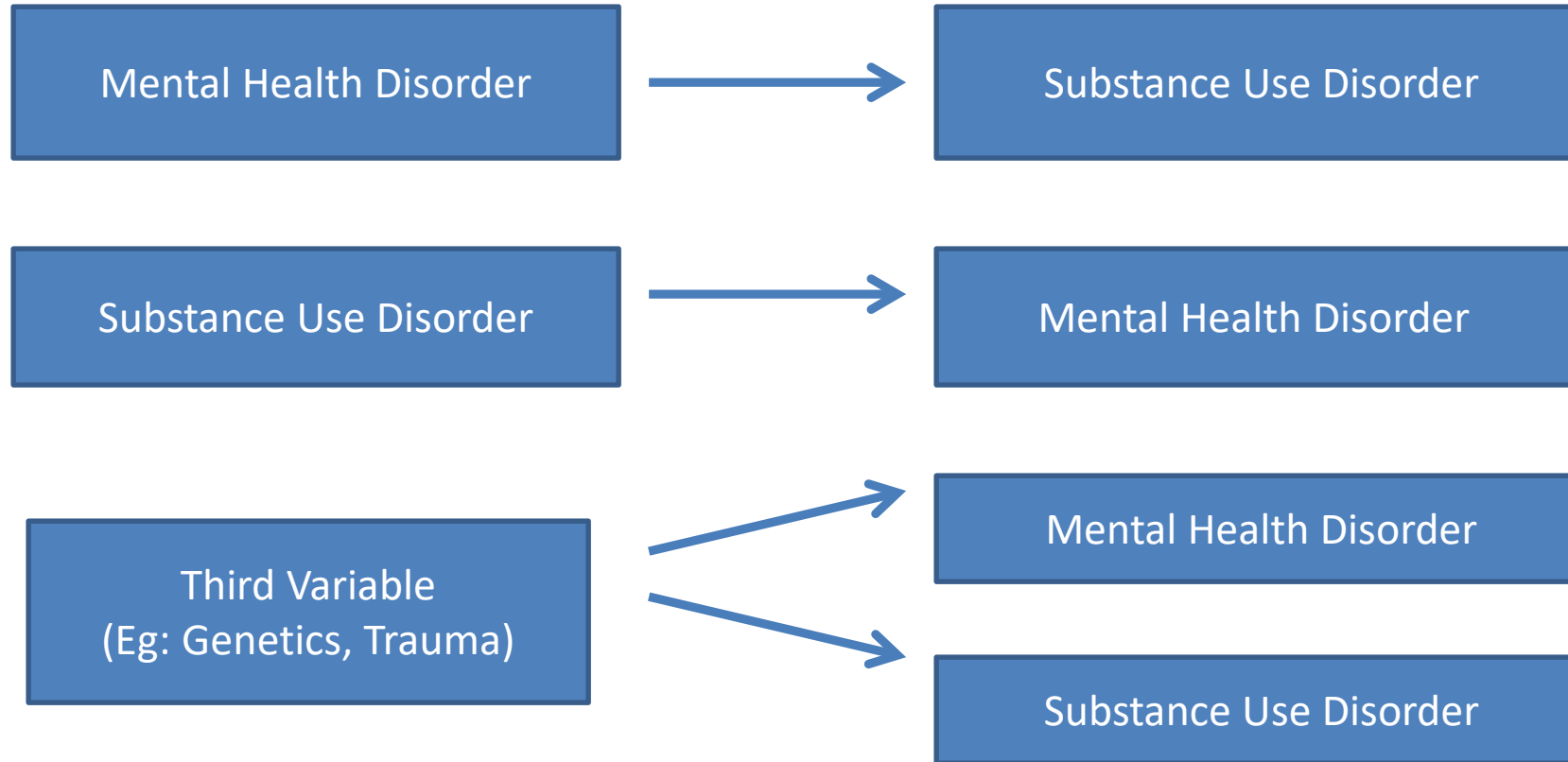
- Rehabilitative Justice
- Goals:
 - Prevent further penetration into the Criminal Justice System
 - Redirect towards a successful life
- Methods
 - Clearly defined and consistent rules, expectations and goals
 - Multidisciplinary Team – CJ, Behavioral Health, School System, Others
 - Consistent Responses and Consequences
 - Mistakes and missteps are teachable moments – Judge becomes an active agent for positive change



Objective Outcomes

- Enhanced personal responsibility
- Pro-social Decision Making
- Personal Resilience

Co-Occurring Disorders: It begins in adolescence.



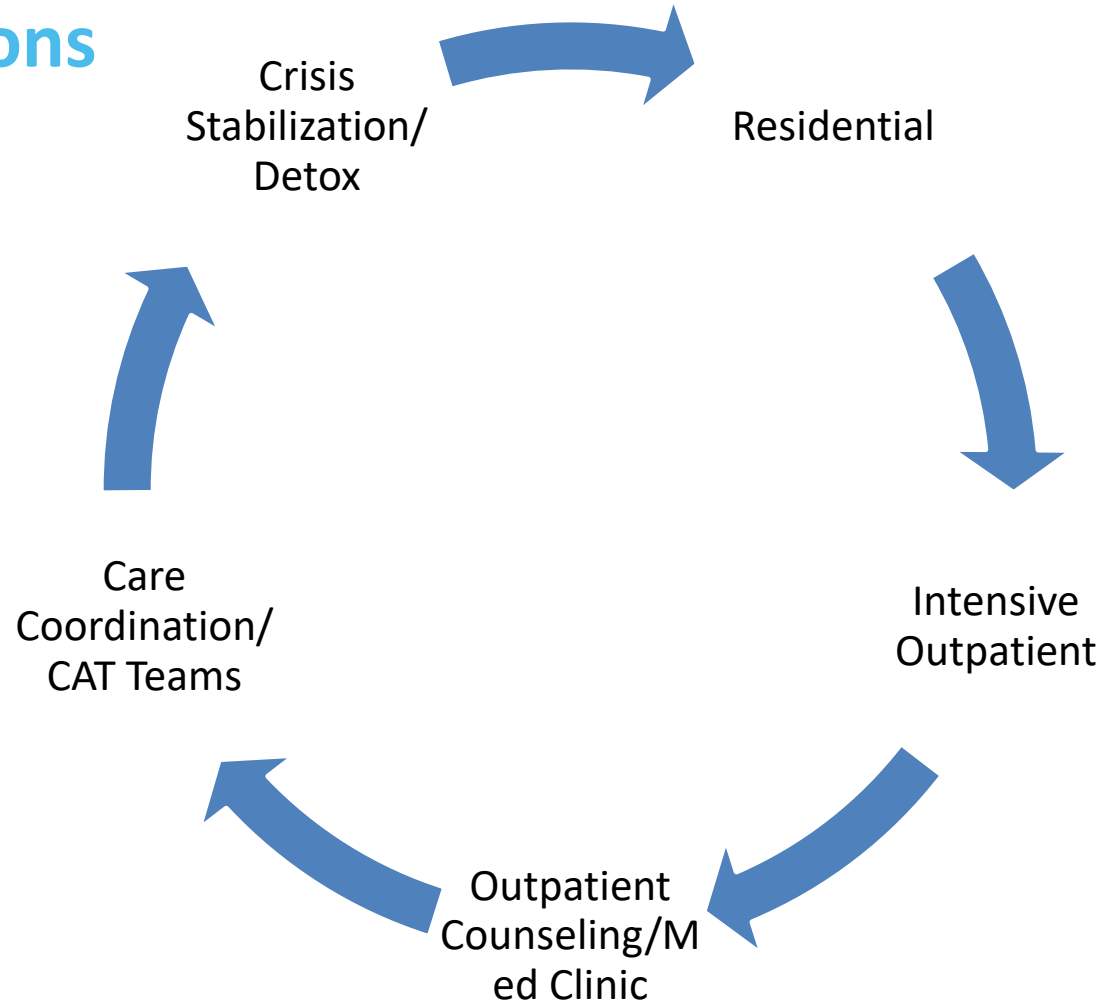
Problems Caused

- Family problems
- School or employment problems
- High risk behavior
- Multiple admissions for crisis stabilization
- Development of Substance Use Disorders
- Increased emergency room admission
- Legal problems and incarceration

What Can We Do?



Treatment Options

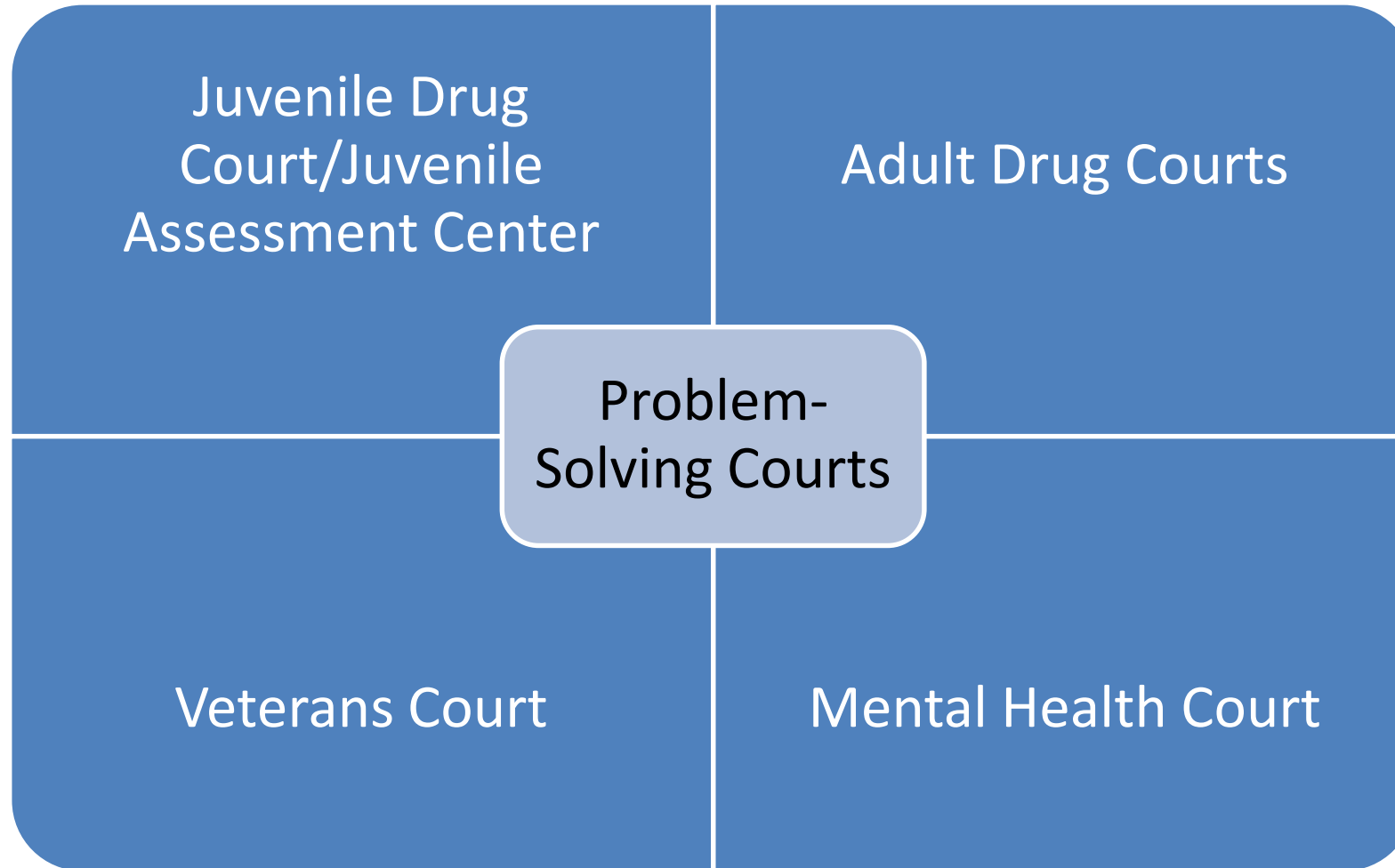


Community Treatment Partnerships

- Community Based Care of Central FL
- Devereux Mobile Crisis
- Wraparound Orange/Seminole
- Seminole & Orange Counties
 - Public Safety Coordinating Council
 - Mental Health & Substance Abuse Task Force
 - Seminole Prevention Coalition
 - Seminole/Orange Opioid Task Force
 - Crisis Intervention Team Training for local law enforcement
 - Seminole/Orange County Courts
 - Orange County Youth Mental Health Management Network Consortium



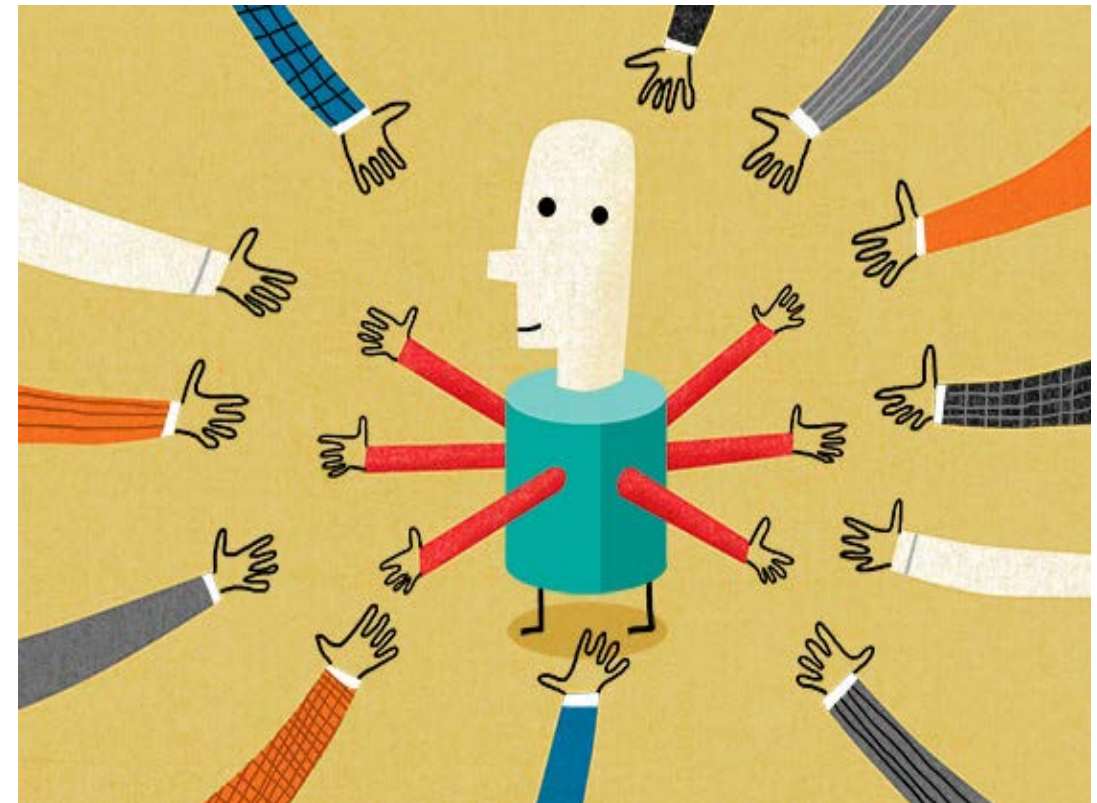
Problem-Solving Courts



How Do We Fund This?

Utilizing a variety of options:

- Insurance
- DCF SAMH funding/Managing Entity
- Grants:
 - BJA, SAMHSA, Reinvestment Grant
- State funds



Expanding to juveniles

- Youth Mental Health Pilot Project
- Zero Suicide Care Coordination
- Future Juvenile Mental Health Court



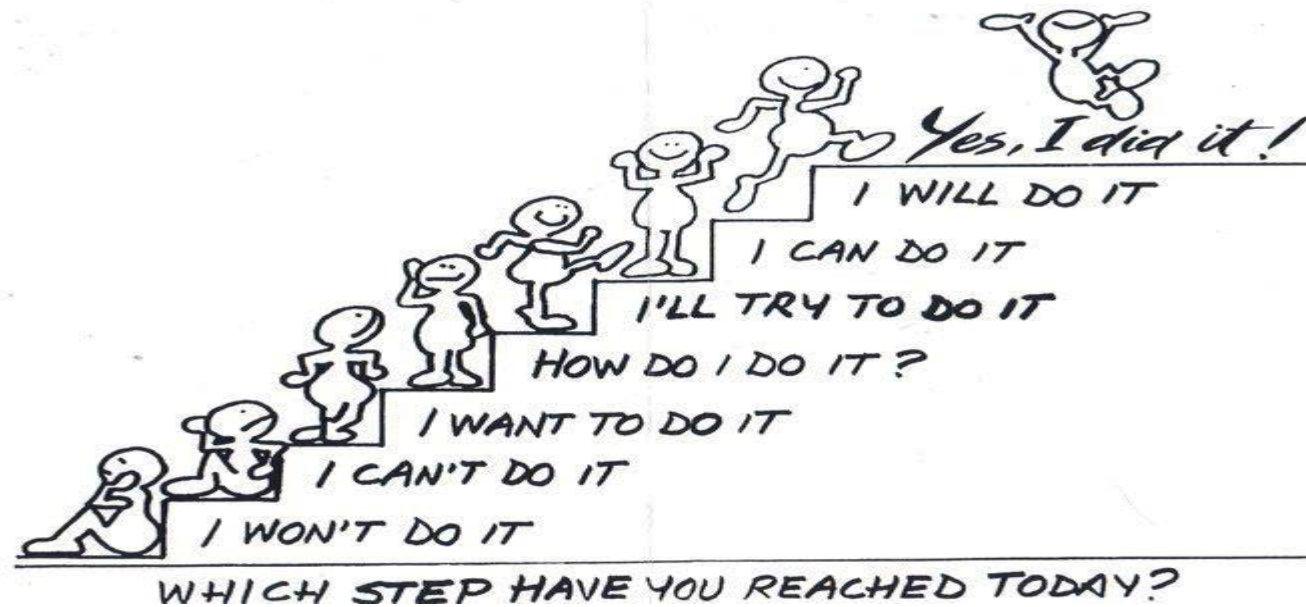
Where do you begin?

- *Juvenile Drug Courts: Strategies in Practice* (2003)
 - 16 strategy guide for building a successful youth problem solving court
 1. Collaborative Planning
 2. Teamwork
 3. Clearly Defined Target Population & Eligibility Criteria
 4. Judicial Involvement & Supervision
 5. Monitoring & Evaluation
 6. Community Partnerships
 7. Comprehensive Treatment Planning
 8. Developmentally Appropriate Services
 9. Gender-Appropriate Services
 10. Cultural Competence
 11. Focus on Strengths
 12. Family Engagement
 13. Educational Linkages
 14. Drug Testing
 15. Goal-Oriented Incentives & Sanctions
 16. Confidentiality



No need to panic!

Take it step-by-step!



Let's take a quick look into the first few...



Who's at the table?

- Identify your stakeholders
 - What makes juveniles different from adults?
 - Lack of control of their environment
 - Adolescent invincibility
 - Heavy influence of peers
 - Family involvement
 - Academic issues

“The needs of youth in juvenile treatment courts are often more complex than that of adults in similar programs.”

(Linden et al., 2010, p 130)



Who's at the table?

- Identify your stakeholders
 - Use your Sequential Intercept Map & the expertise of current stakeholders
 - With our adults we likely already have:
 - Courts
 - Law Enforcement
 - Behavioral Health
 - Local Government
 - We know you'll need:
 - Family
 - School System
 - Other unique elements to your community

"Results showed that the relative effectiveness of JDC and the evidence-based treatments was likely due, at least in part, to the capacity of these interventions to alter well-established family (e.g., parent supervision) and peer (e.g. association with deviant peers) risk factors for antisocial behavior in adolescents."

(Schaeffer et al., 2010, p 57)



We know who, now how?

- Know who has the most pull
 - Identify a leader who can start the conversations
 - Work together to understand who the right connection is to avoid setbacks
- Know your buy-in for each group
 - Look before you leap
 - Try to understand how your court will benefit those you wish to engage
 - Read the audience, listen to concerns, remain open
 - Be prepared for hesitation and ready for open dialogue to figure out how to gain commitment





The Homelessness Initiative Example

The Need

- 60 Minutes story on child homelessness in Seminole County
- Entities working separately to tackle the issue

The Move

- County contracts with American Roundtable to Abolish Homelessness
- Strategic planning, mapping, begins

Stakeholders

- Individual conversations → Contracts/Agreements
- Diverse group now brought together with unified goal

Stumbling Blocks

- Rigidity of beliefs/understanding → Tensions → Lower team turnout
- Pre-team experiences lead to distrust & battles over territory

The Lessons

- Remaining open, flexible & able to adapt is KEY
- Appreciate expertise that is different from your own!



Homelessness Initiative: The Stakeholders



Homelessness Initiative: The Results

- ✓ Ongoing process change
 - ✓ More open, flexible dialogue
 - ✓ Return of stakeholders to the table
 - ✓ Excellent outcomes in 1st year
 - >168 individuals & families housed
 - 54% reduction in ER visits
 - 100% housing retention
 - 96% of pilot participants maintained or increased income
- (Housing the First 100: By the Numbers, Seminole County report to community, 2017)
- ✓ Improved understanding of roles in solving the problem
 - Additional, unexpected partnerships & opportunities
 - Discussion of creation of new problem solving court



FINAL THOUGHTS

- Learn about Evidence Based Models and Novel Programs
 - You do not have to reinvent the wheel ...
- Understand your community's needs, partners and systems
 - Sequential Mapping is one way to bring everyone together
- Collaborate to design a system that is responsive and flexible
 - Be creative and modify what is out there to fit your needs
- Make a commitment to create your system and set deadlines you intend to keep
 - Your best intentions may never happen if you don't
- Focus on **CONTINUOUS** Transformational, Rapid Cycle Change



Questions?





David Lloyd
Founder

MTM SERVICES



Scott Lloyd
President

MTM SERVICES



Michael Flora M.B.A., M.A.Ed., L.P.C.C., L.S.W.
Lead Operations Consultant

MTM SERVICES



Joy Fruth M.S.W.
Lead Process Change Consultant

MTM SERVICES



Charlie Grantham
IT and Process Optimization Consultant

MTM SERVICES



Jennifer Hibbard
Operations Consultant

MTM SERVICES



Annie Jensen M.S.W., L.C.S.W.
Process Change Consultant

MTM SERVICES



David Lloyd, Jr.
Operations and Process Optimization Consultant

MTM SERVICES



Willa Presmanes M.Ed., M.A.
Medical Necessity Expert and Co-Author of the DLA-20

MTM SERVICES



J. Octavio Salazar MD
Medical Operations Consultant

MTM SERVICES



David Swann M.A., L.C.A.S., C.C.S., L.P.C., N.N.C.
Senior Integrated Healthcare Consultant

MTM SERVICES



Valerie Westhead MD
Medical Operations Consultant

MTM SERVICES



Marian Bradley
Director of Operations & Planning

MTM SERVICES



Jennifer Senechal
Financial Controller / Cost and Revenue Consultant

MTM SERVICES